

## Symmetricom GPS Receiver GPSDO 10MHz 1PPS GPS Disciplined Clock



Keep GPSDO running about 24Hours,it will getting very stable 10MHz.it need a little bit long time to download GPS data(30min-2Hours).

**LEDs lighted after 5 second when power adapter plug-in (system initial)**

ON: LED LIGHT WHEN POWER UP (LIGHT ONE TIME ONLY )

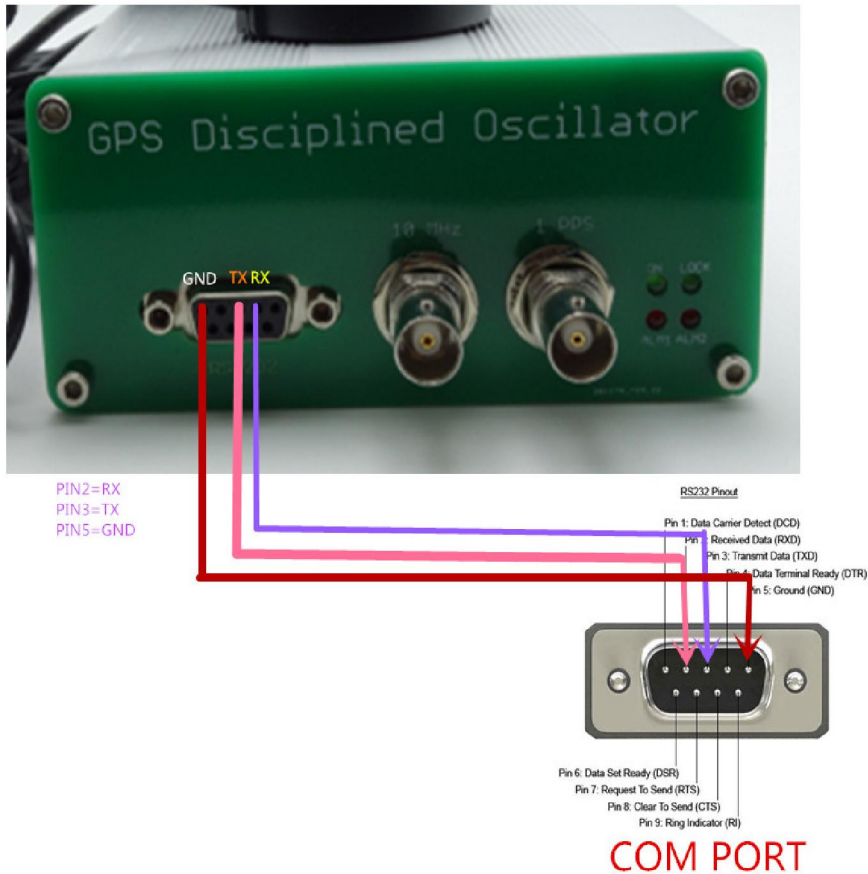
LOCK :solid when power on. when it flashed slowly(GPS tracked).10MHz locked when it Flashed fast.

ALARM1&ALARM2 Both Lighted when GPS antenna open

10MHz: 10MHz output

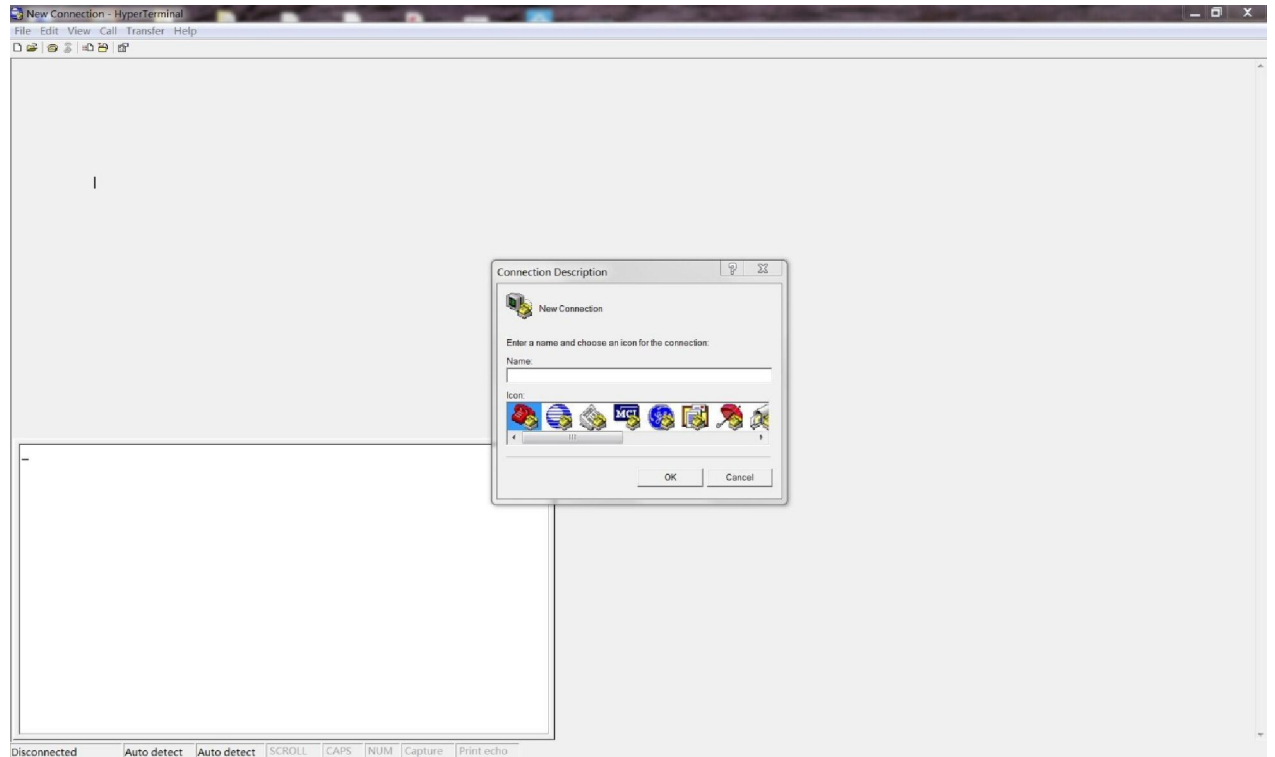
1PPS: 1PPS OUTPUT

RS-232 :PIN2 RX PIN3 TX PIN5 GND

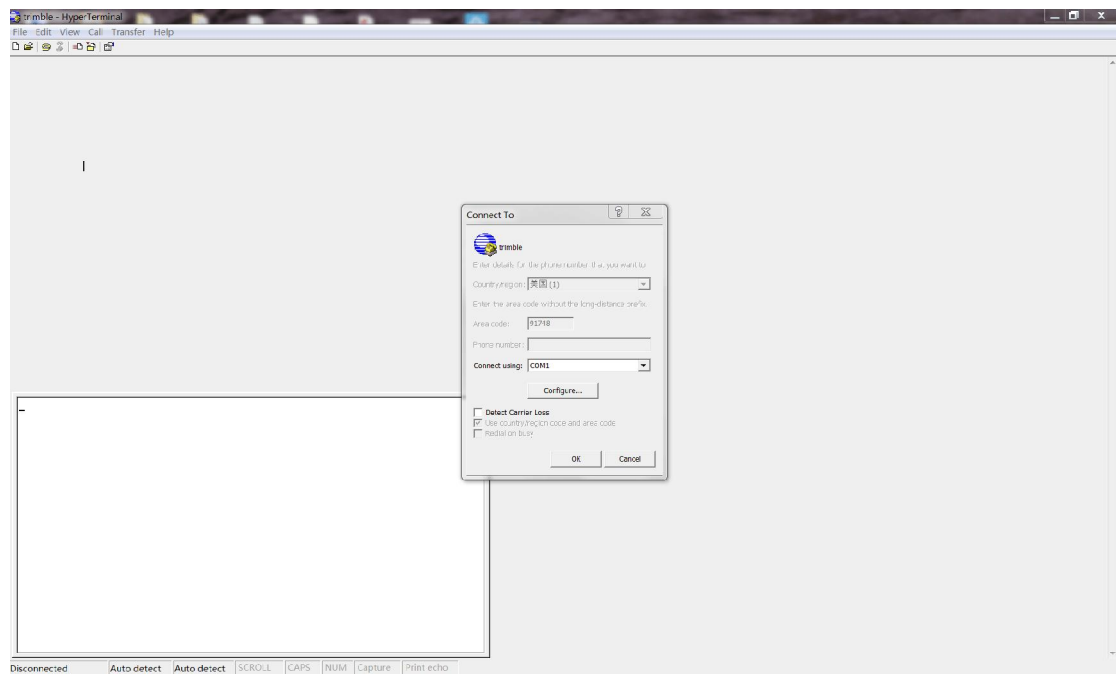


- 1, Both Leds of Alarm1 & ON will be lighted when Cold start. (Current 2.05A), They should be off after initialized
- 2, RS-232 Socket. you can connect to your PC's real COM port (DB9 Pin2,3,5 NOT FOR USB TO COM CABLE). by HyperTerminal setting COM port to 57600bps. N. 8 Bit. then type: "help".

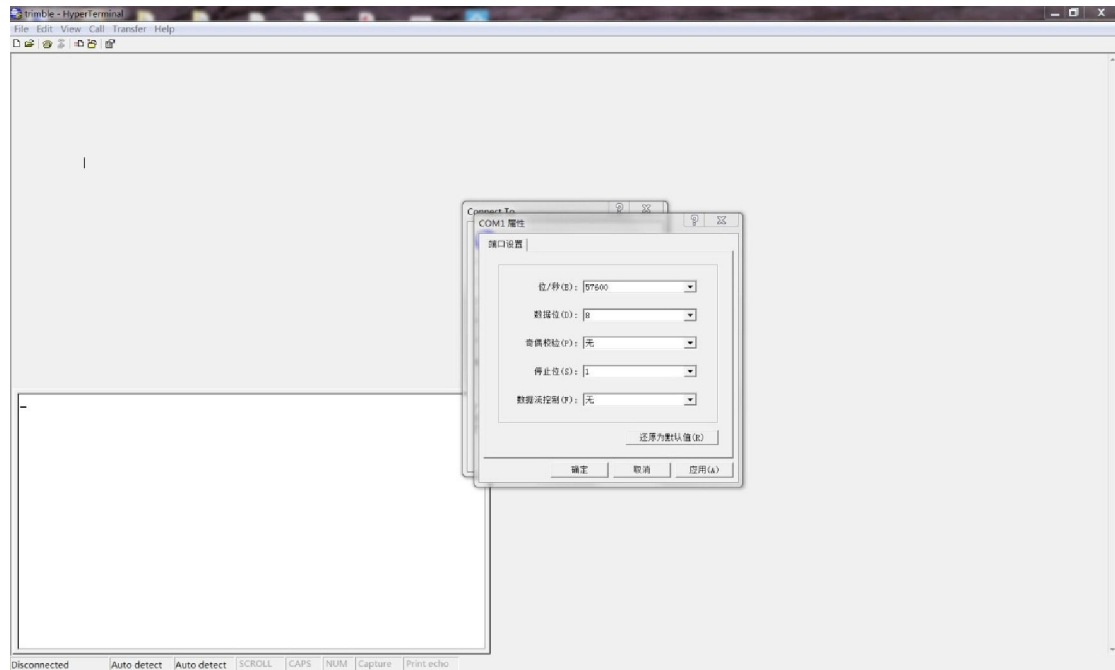
Step 1:



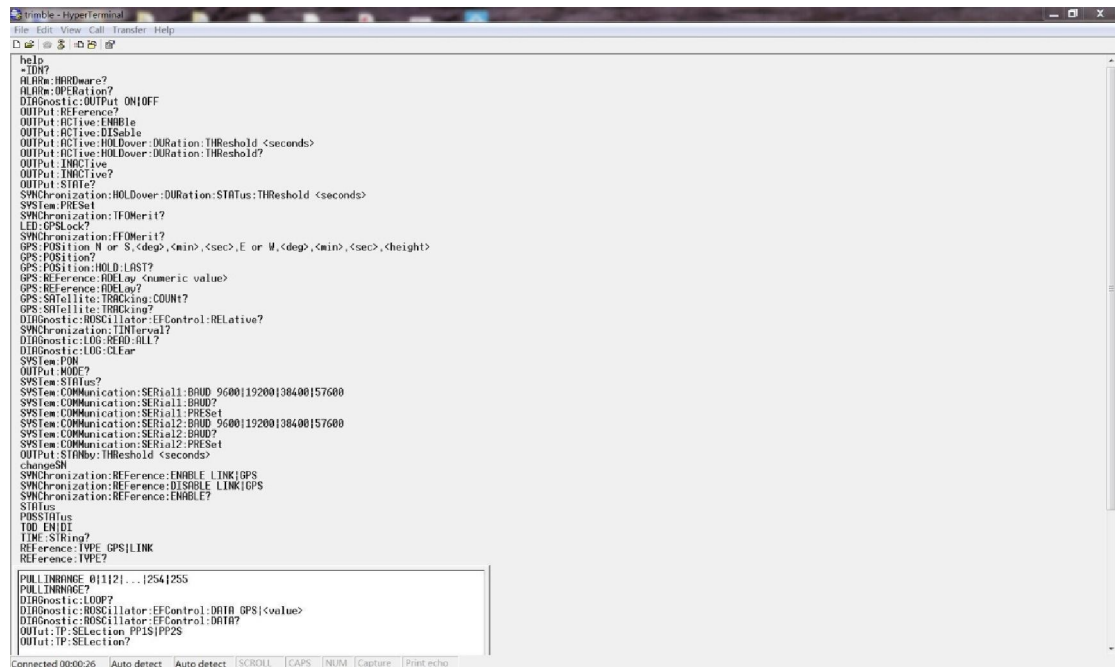
## Step2:



### step 3:



### Step4



### Step5:

```
UartBle - HyperTerminal
File Edit View Call Transfer Help
D [Icons]

SWChorization:HOmerit?
GPS:Position M or S,<deg>,<min>,<sec> .E or W,<deg>,<min>,<sec>,<height>
GPS:Position?
GPS:Position:HOLD:LAST?
GPS:Reference:ADeLw <numeric value>
GPS:Reference:ADeLw?
GPS:Satellite:TRACKing:COUNT?
GPS:Satellite:TRACKing?
DIDagnostic:ROSCillator:EFControl:Relative?
SWChorization:LINterval?
DIDagnostic:LOG:REd:ALL?
DIDagnostic:LOG:CLear
SYStem:POW
OUTPUT:MODE?
SYStem:STAtus?
SYStem:COMMunication:SERial1:BRUD 9600|19200|38400|57600
SYStem:COMMunication:SERial1:BRUD?
SYStem:COMMunication:SERial1:PRESet
SYStem:COMMunication:SERial2:BRUD 9600|19200|38400|57600
SYStem:COMMunication:SERial2:BRUD?
SYStem:COMMunication:SERial2:PRESet
OUTPUT:STANby:ThReshold <seconds>
changeSN
SWChorization:REFErence:ENABLE LINK1GPS
SWChorization:REFErence:DISABLE LINK1GPS
SWChorization:REFErence:ENABLE?
STAtus
POSSitius
TOD:FN:IDI
TIME:STRing?
REFErence:TYPE:GPS:LINK
REFErence:TYPE?

PULL:NRANGE:011|21...|254|255
PULL:NRANGE?
DIDagnostic:LOOP?
DIDagnostic:ROSCillator:EFControl:DATA GPS|<value>
DIDagnostic:ROSCillator:EFControl:DATA?
OUTPUT:TP:SELECTION:PP1S|PP2S
OUTPUT:TP:SELECTION?
GPSSystem:Satellite:TRACKing:EMANgle <degrees>
GPSSystem:Satellite:TRACKing:EMANgle?
DIDagnostic:TCODE:STAtus:OMASK
DIDagnostic:TCODE:STAtus:OMASK?
DIDagnostic:TCODE:ERRor:OMASK
DIDagnostic:TCODE:ERRor:OMASK?
DIDagnostic:HULDowner:DELAy
DIDagnostic:HULDowner:DELAy?
GPS:Satellite:TRACKing:IGNore <PRN> , ... <PRN>
GPS:Satellite:TRACKing:IGNore?
GPS:Satellite:TRACKing:INCLude <PRN> , ... <PRN>
GPS:Satellite:TRACKing:INCLude?
GPS:Satellite:TRACKing:<select> .ALL
? or HEL?

Command complete
UCCM-P >
```

Connected 00:00:46 | Auto detect | Auto detect | SCROLL | CAPS | NUM | Capture | Print echo